



# MONTHLY MEMBERSHIP PROGRESS REPORT

District 5M 9

Results as of: 05/31/2019

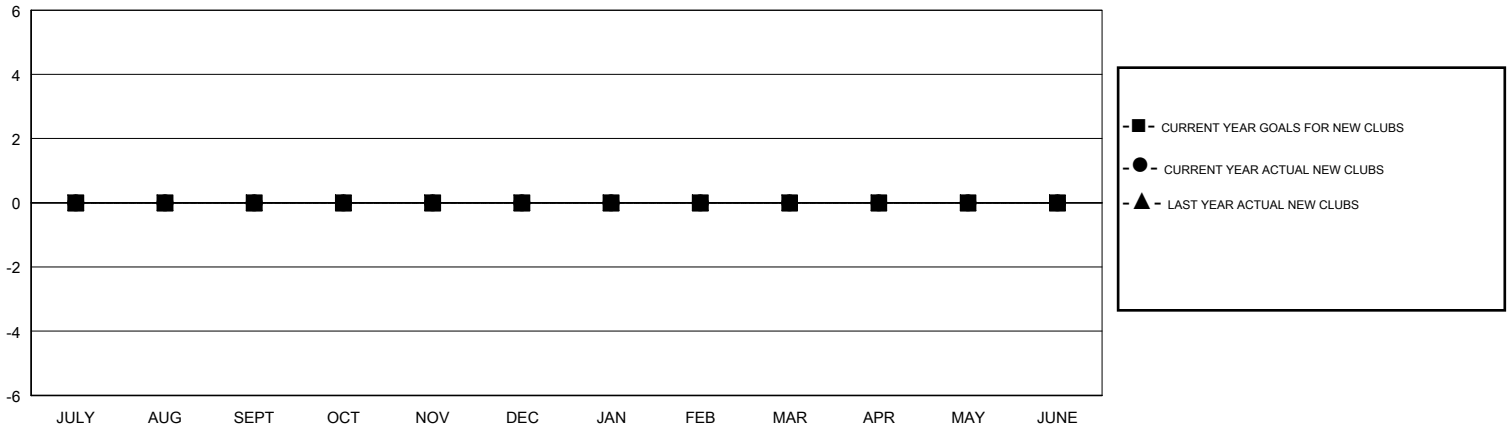
GMT: OPEN

LOCATION MINNESOTA

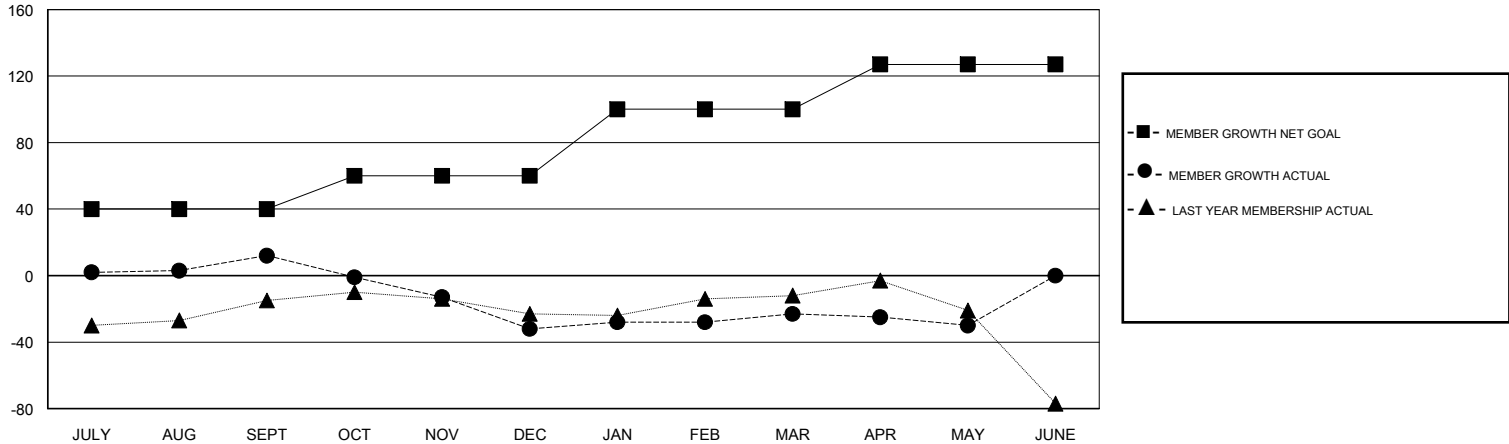
GMT CA

Clubs				Members			
RESULTS FOR 2018-2019				RESULTS FOR 2018-2019			
QUARTER	NEW CLUB GOAL	NEW CLUBS	DROPPED CLUBS	QUARTER	MEMBER GROWTH NET GOAL	MEMBER GROWTH ACTUAL	DROPPED MEMBERS ACTUAL (including transfers)
JULY/AUG/SEPT	0	0	0	JULY/AUG/SEPT	40	71	46
OCT/NOV/DEC	0	0	1	OCT/NOV/DEC	20	29	68
JAN/FEB/MAR	0	0	0	JAN/FEB/MAR	40	44	31
APR/MAY/JUNE	0	0	0	APR/MAY/JUNE	27	29	30

GOALS AND ACTUAL NEW CLUBS CUMULATIVE



GOALS AND ACTUAL MEMBERS CUMULATIVE



DROPPED CLUBS: 1	48 CLUBS OF 67 ADDED 1 OR MORE NEW MEMBERS	<u>GENDER DISTRIBUTION</u> MALE 1,361 (61.86%) FEMALE 839 (38.14%) Women Percentage Fiscal Year Goal: 0%
<u>DROPPED MEMBERS</u> DECEASED 35 CLUB CANCELLED 0 OTHER 140 TOTAL 175	<a href="#">CLICK HERE FOR CUMULATIVE MEMBERSHIP DATA</a>	TOTAL FAMILY UNIT MEMBERS 729 FAMILY MEMBERS PAYING HALF DUES 367